


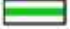

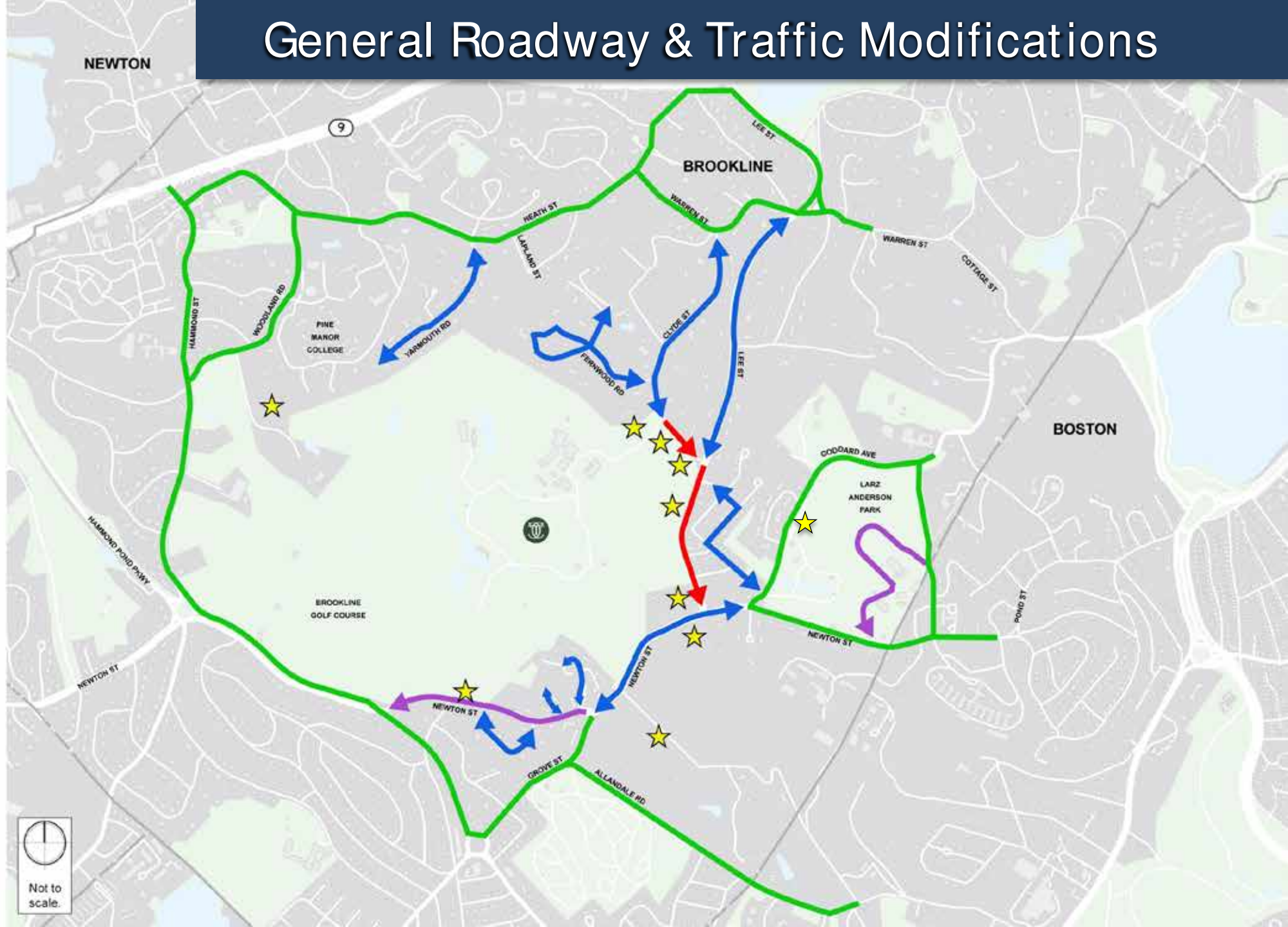


General Roadway & Traffic Modifications

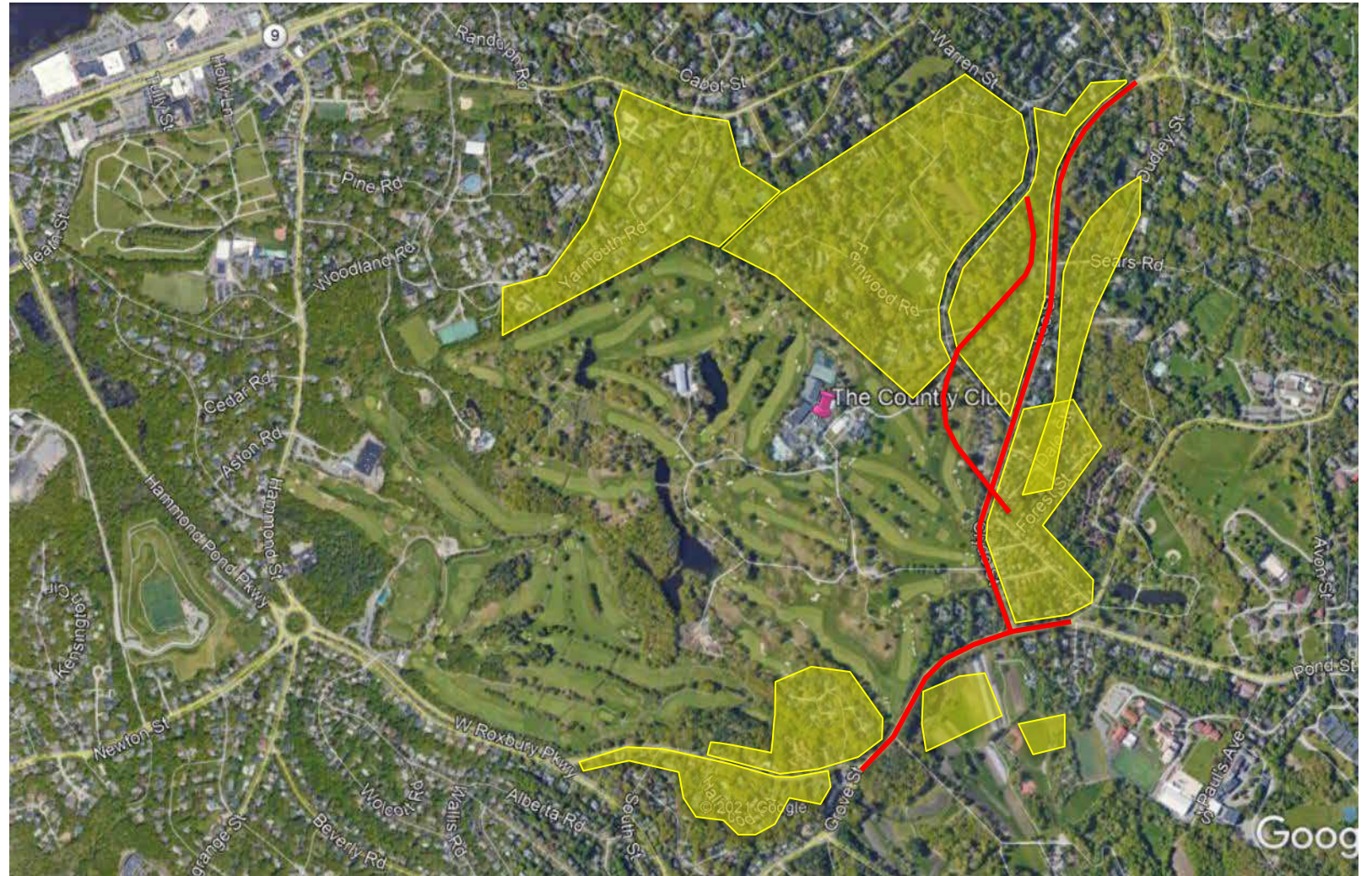
-  One-way (Residential Access Only)
-  Two-way (Residential Access Only)
-  One-way (General Public)
-  Two-way (General Public)
-  Shuttle Bus Destination



Limited Access Plan – Impacted Neighborhoods

To ensure a safe, secure perimeter around TCC and mitigate unwarranted fan parking – access to the below neighborhoods will be controlled via Resident & Resident Guest parking passes.

- § Benjamin Place
- § Clyde Street
- § Country Road
- § Dale Street
- § Fairgreen Place
- § Fernwood Road
- § Forest Street
- § Hallwood Road
- § Larkin Road
- § Lee Street
- § Meadowbrook Road
- § Newton Street
- § Whitney Street
- § Yarmouth Road



Uninterrupted access for residents, emergency services, mail/packages, school buses, waste collection, and other residential services.